

DOSSIER DE CONCERTATION

Rue Gaston Doumergue - 31170 Tournefeuille

Parcelles 258-259-1-2-4-5-6-374-375









COURSE
DU SOLEIL

VENT DOMINANT
AUTAN

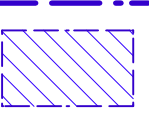
1- SITE EXISTANT



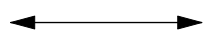
BATIMENTS DE LOGEMENTS COLLECTIFS



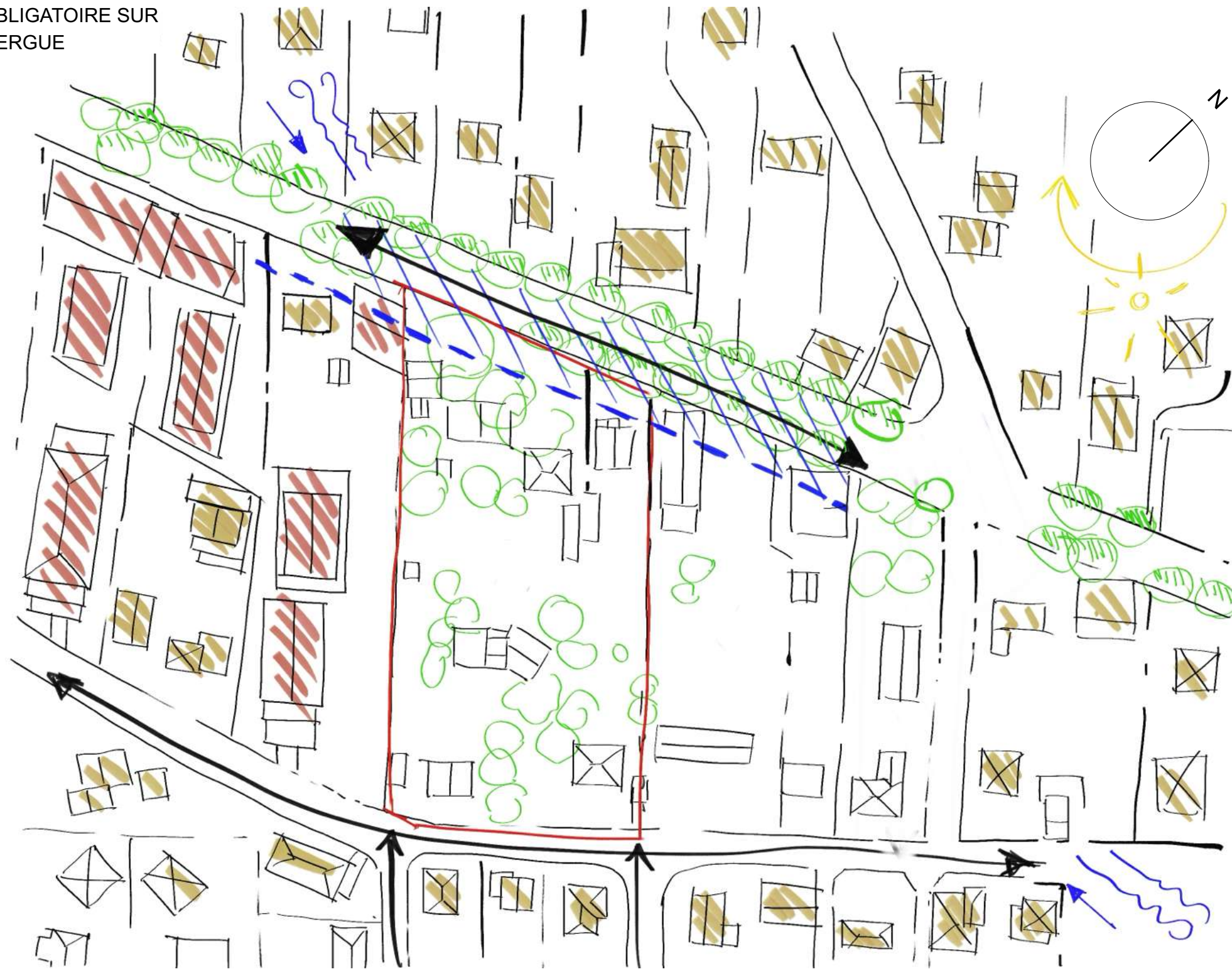
VILLAS INDIVIDUELLES



SERVITUDE // ELARGISSEMENT
ET CREATION D'UNE VOIE
ALIGNEMENT OBLIGATOIRE SUR
GASTON DOUMERGUE



AXE MAJEUR



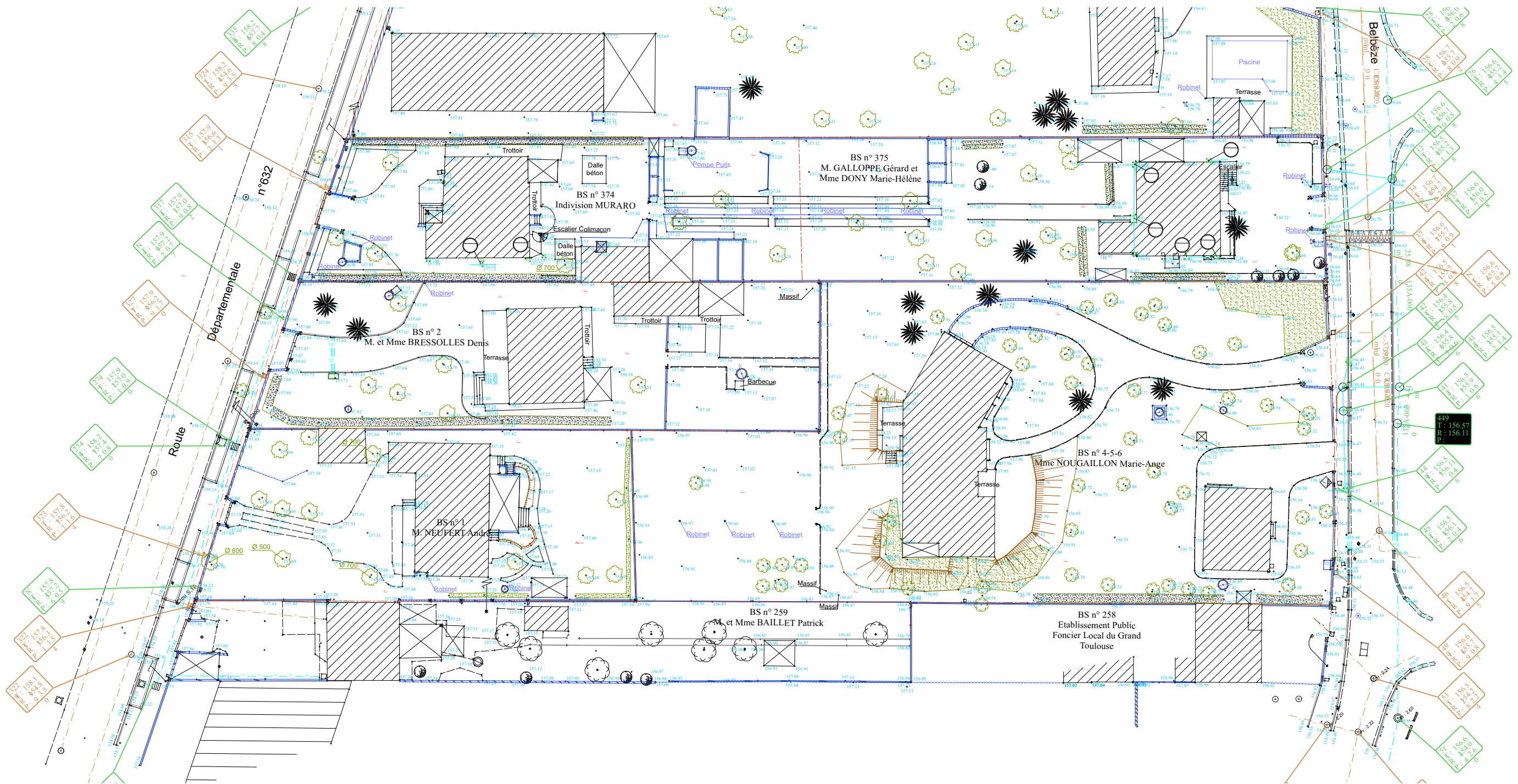
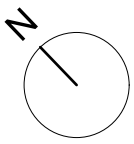
3- ENVIRONNEMENT

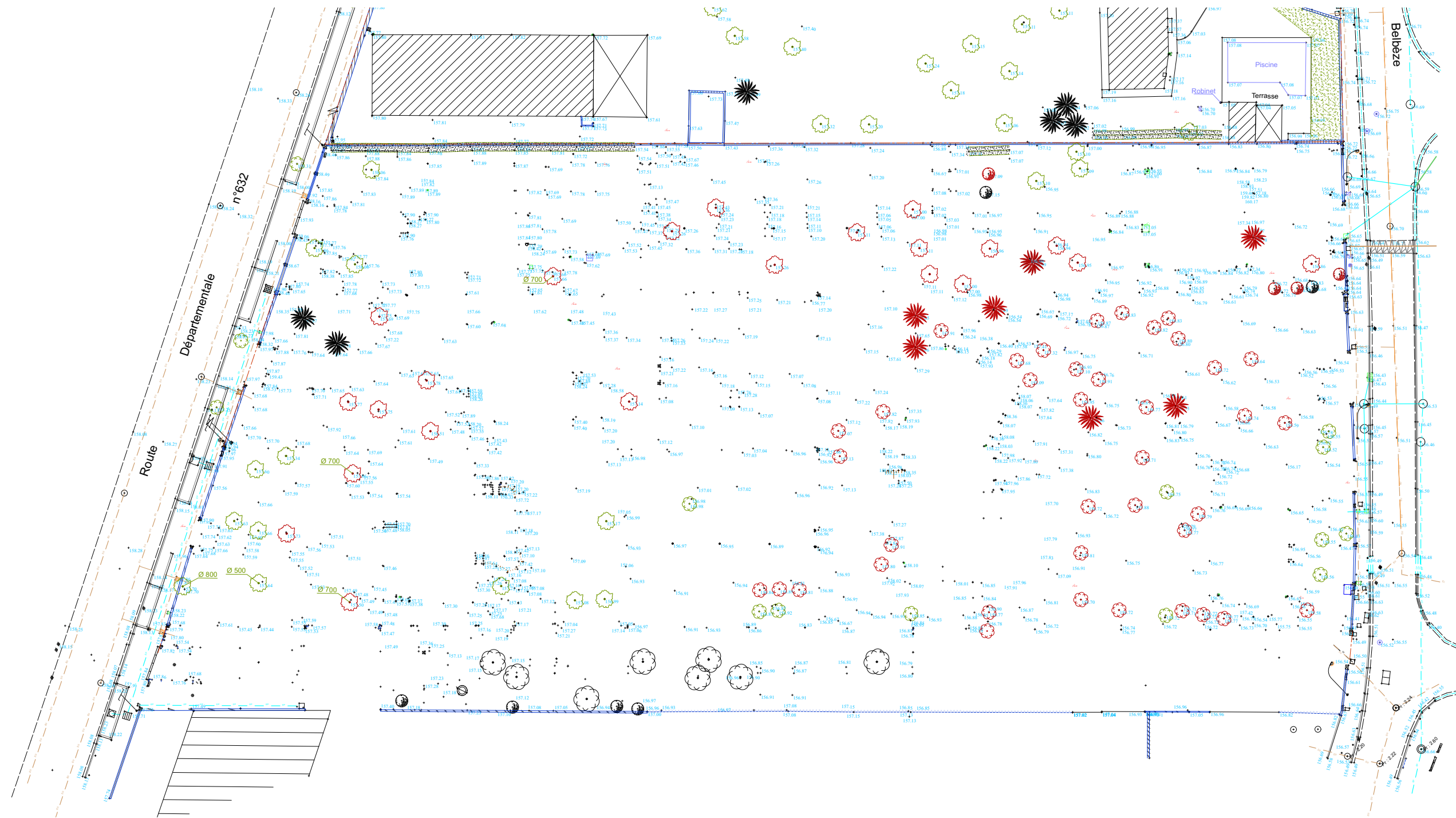
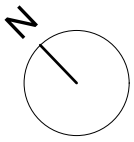






3- VEGETALISATION DU COEUR D'LOT ET PERCEES VISUELLES/

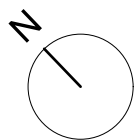


3- PROJET IMPLANTATION ET EPANNELAGE : S'OUVRIRE AU SUD OUEST / S'ÉLOIGNER DES VOISINS PAR UN REcul DE 22m VIS À VIS DE LA RUE DE BELBEZE / SE PORTER DES VENTS DOMINANTS / CREATION D'UN VASTE COEUR D'ÎLOT EN PLEIN TERRE / GRADATION DU BATI DU NORD AU SUD





-   Arbres à supprimer/remplacer
-   Arbres à conserver



PARCELLE ± 8439m²

• SDP ± 7323 m² dont:

- 35% Lgts LLS (60%PLUS/40%PLAI) = 2563m²
- 15% Lgts BRS = 1098 m²
- 50% Lgts LIBRE = 3662 m²

• ± 127 logements de 53,23m² SHAB moyenne dont :

- Lgts LLS = 44
- Lgts BRS = 19
- Lgts LIBRE = 64

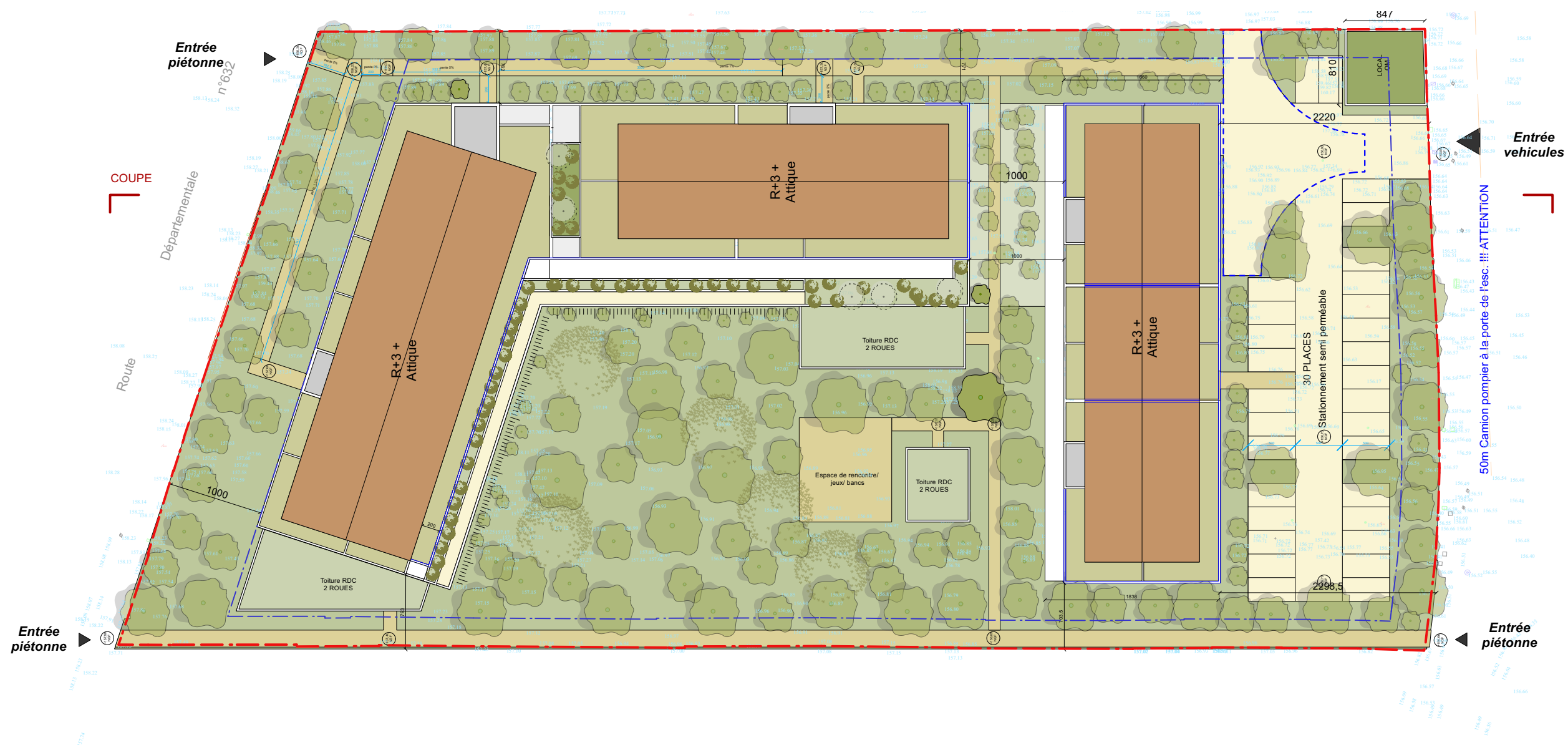
• Parking 203 places règlementaires à raison de:

- Lgts LLS = 1pl / Lgt soit 44 places
- Lgts BRS = 1pl / 60m² mini 2pl/Lgt soit 37
- Lgts LIBRE = 1pl / 60m² mini 2pl/Lgt soit 122

Abatement si autopartage soit :

- Parking projet 154 places en RDC et R-1 et aérien.
Dont la moitié au RDC d'un des bâtiments pour pouvoir majorer la HF dont 24,2% : mise à disposition de véhicules électriques en autopartage

• **Surface espace vert pleine terre (vert + cheminement piétons) = ± 4150m² soit 49,2%**





EQUINOXE 21 JUIN 10h



EQUINOXE 21 JUIN 14h



EQUINOXE 21 JUIN 17h



EQUINOXE 21 DECEMBRE 11h



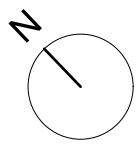
EQUINOXE 21 DECEMBRE 14h



EQUINOXE 21 DECEMBRE 16h

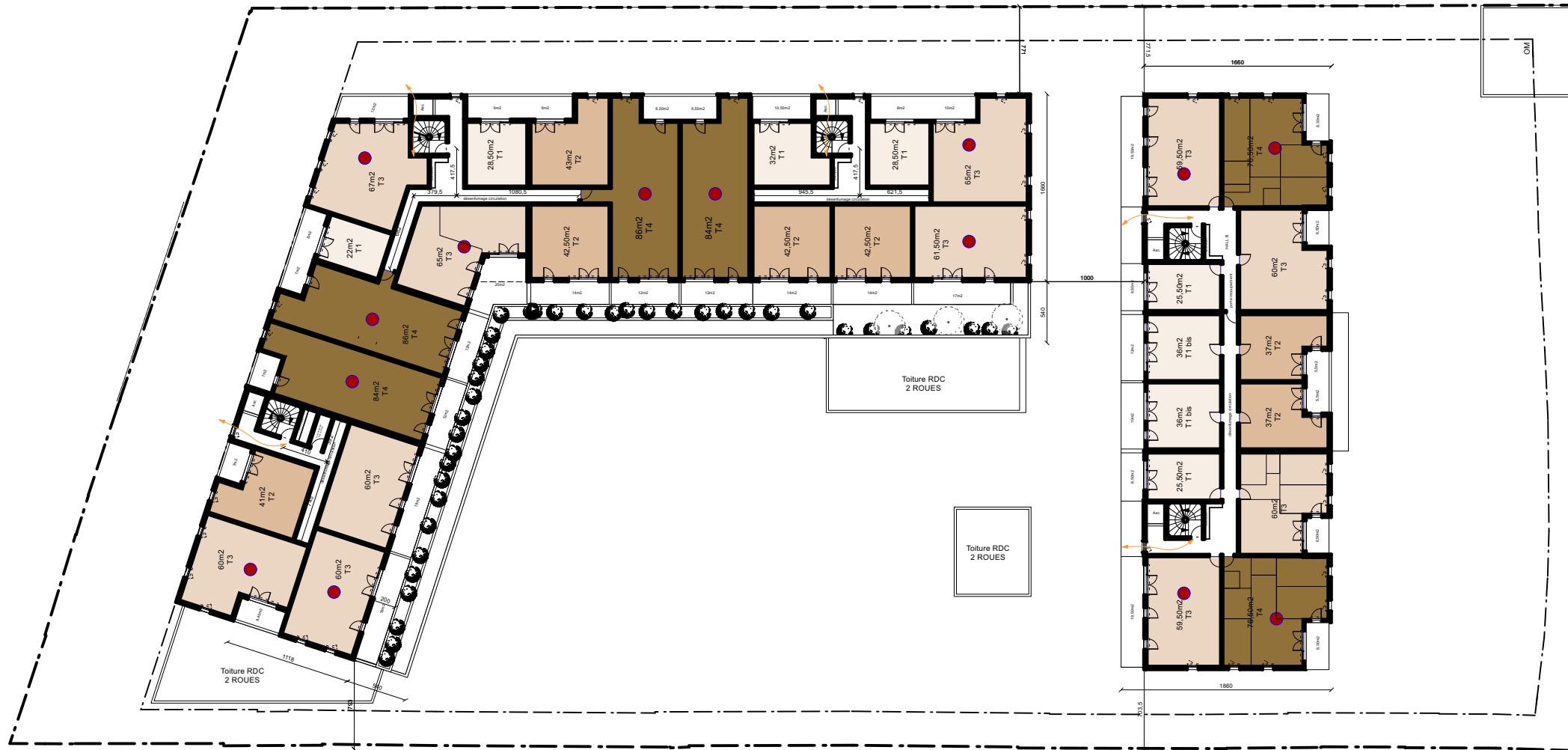
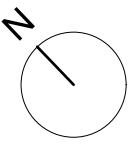












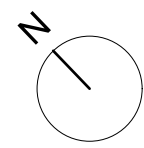
LEGENDES :

- CIRCULATION ECLAIREE
- LOGEMENTS BI-ORIENTES / TRAVERSANTS
- T1
- T2
- T3
- T4



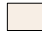





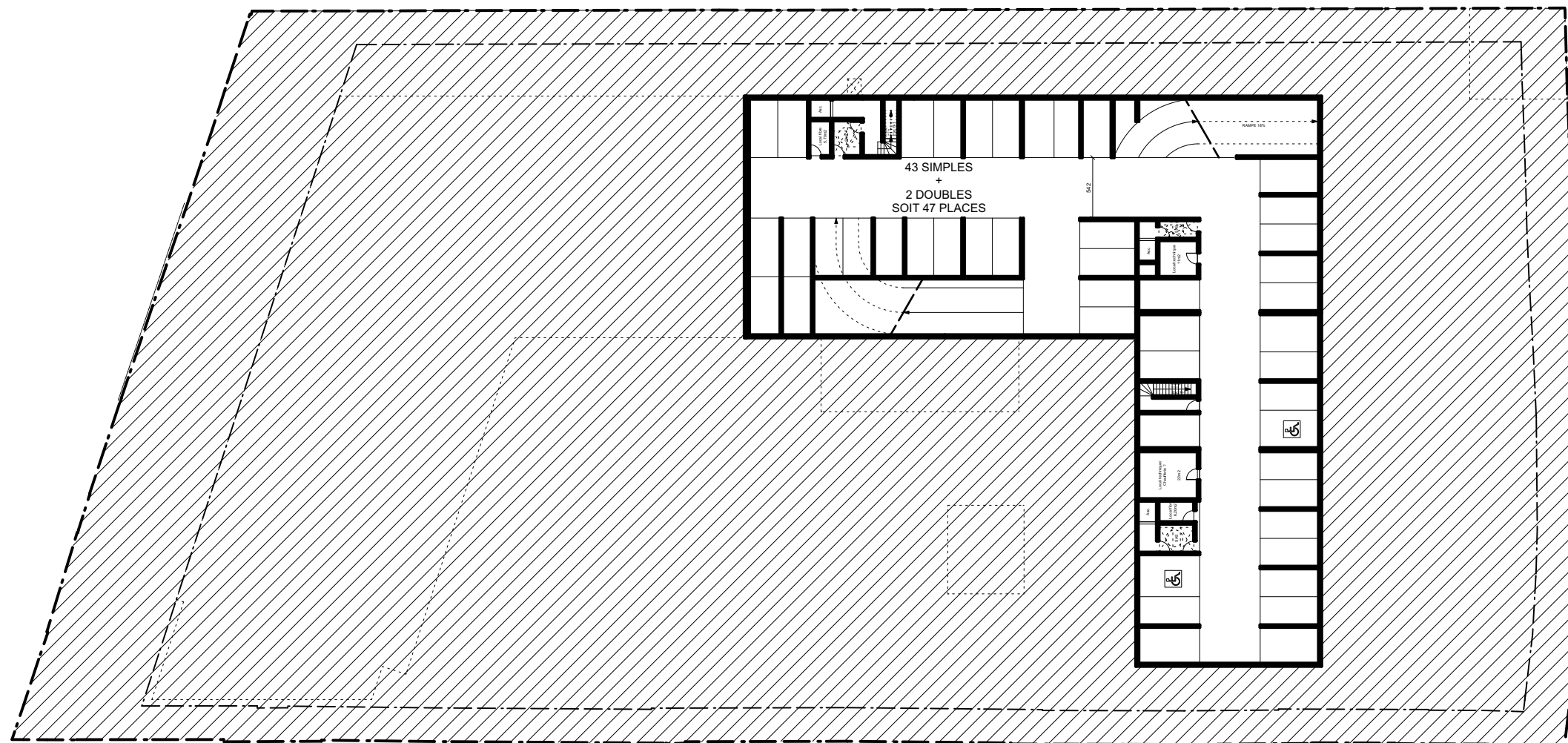
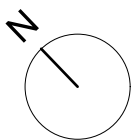
LEGENDES :

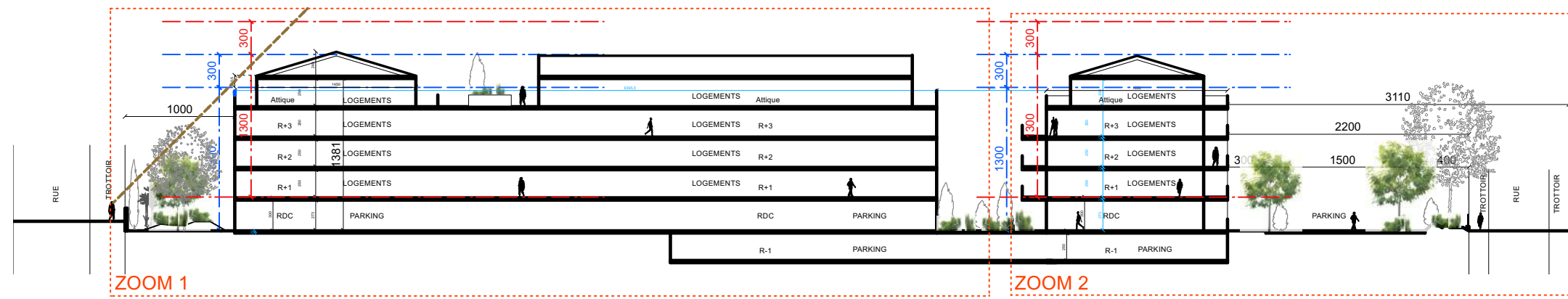
-  CIRCULATION ECLAIREE
-  LOGEMENTS BI-ORIENTES / TRAVERSANTS
-  T1
-  T2
-  T3
-  T4



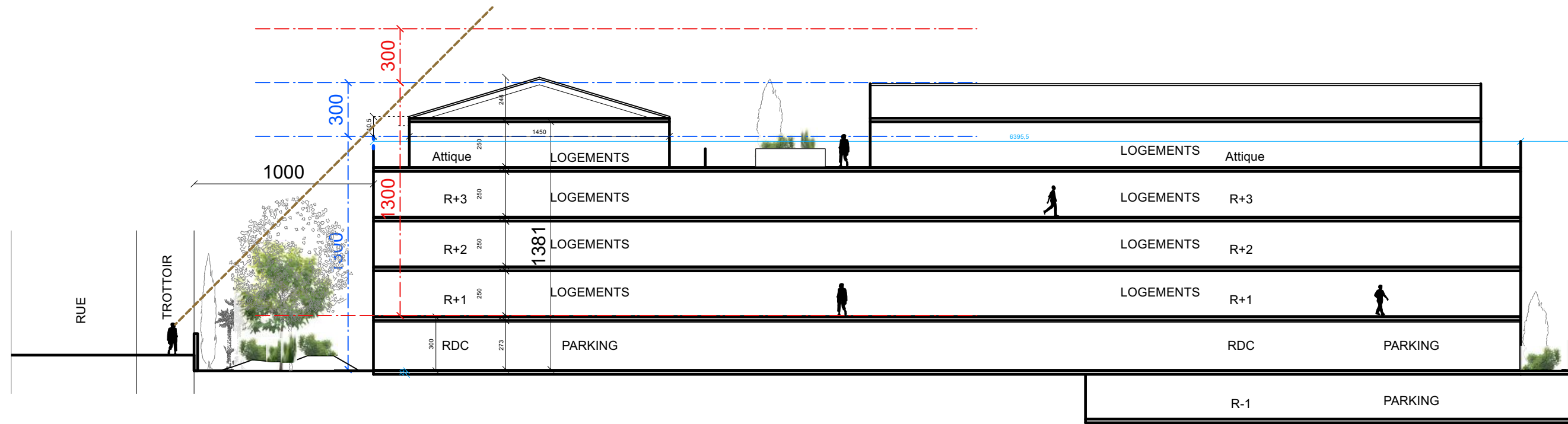
LEGENDES :

-  CIRCULATION ECLAIREE
-  LOGEMENTS BI-ORIENTES / TRAVERSANTS
-  T1
-  T2
-  T3
-  T4

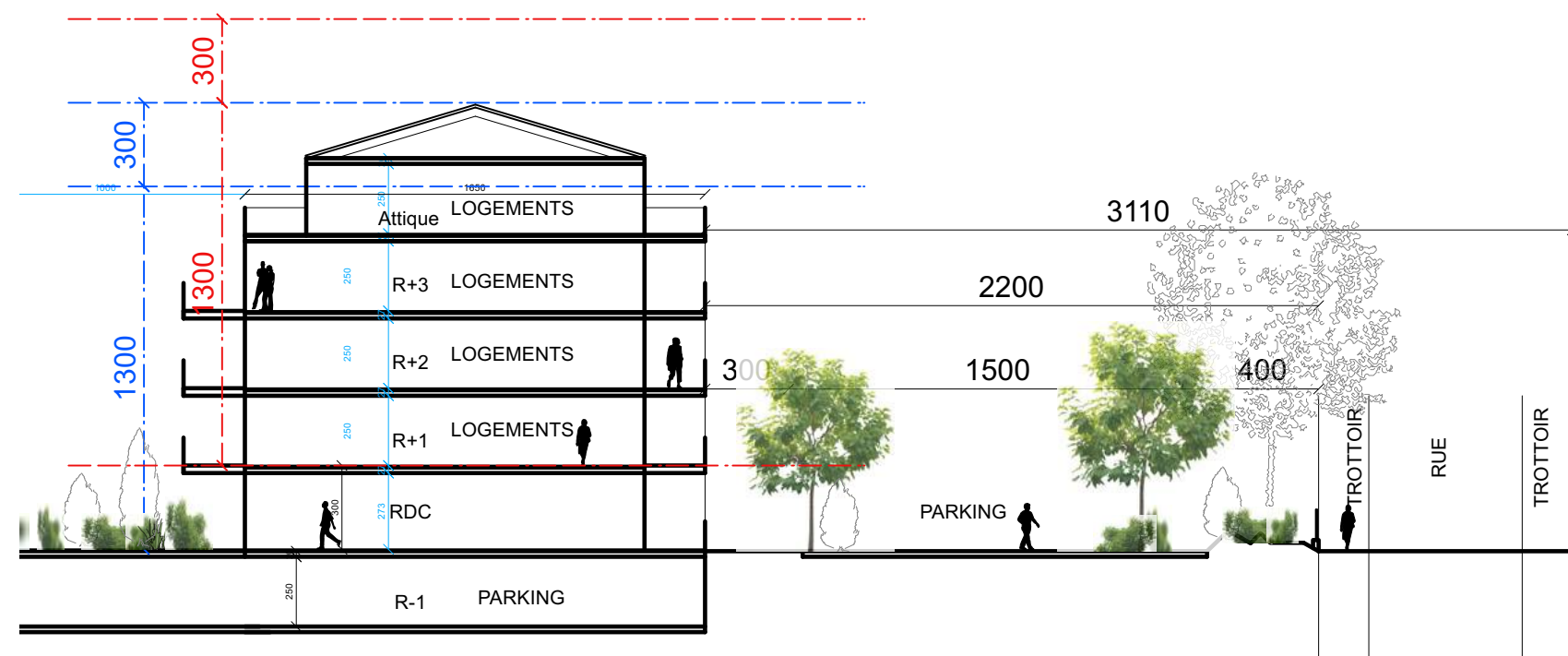




COUPE DE PRINCIPE 1/500°

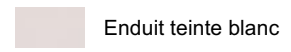
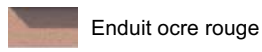
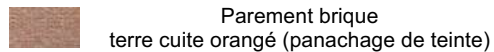
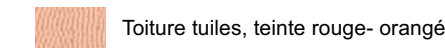
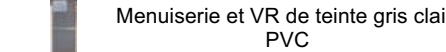
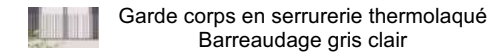


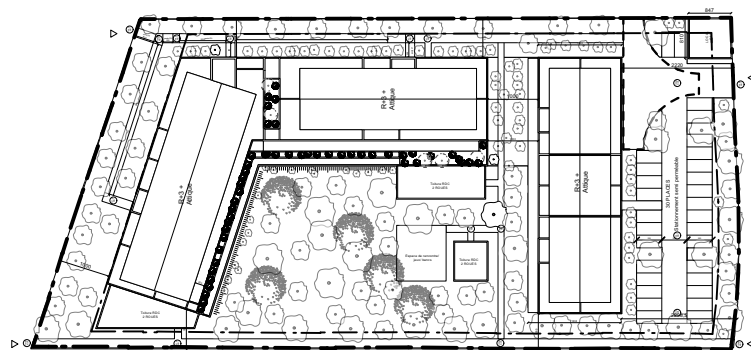
ZOOM 1



ZOOM 2

LEGENDES

-  Enduit teinte blanc
-  Enduit ocre rouge
-  Parement brique terre cuite orangé (panachage de teinte)
-  Toiture tuiles, teinte rouge- orangé
-  Menuiserie et VR de teinte gris clair PVC
-  Garde corps en serrurerie thermolaqué Barreaudage gris clair



FACADE 1

FACADE 2









FACADE 1



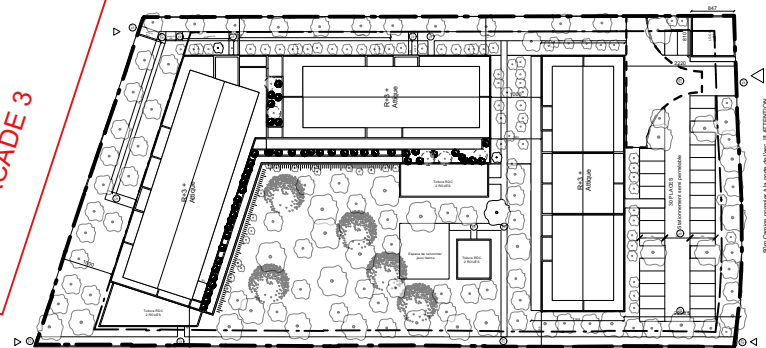
FACADE 2

LEGENDES

-  Enduit teinte blanc
-  Enduit ocre rouge
-  Parement brique terre cuite orangé (panachage de teinte)
-  Toiture tuiles, teinte rouge- orangé
-  Menuiserie et VR de teinte gris clair PVC
-  Garde corps en serrurerie thermolaqué Barreaudage gris clair

FACADE 4

FACADE 3



FACADE 3



FACADE 4



DEPUIS L'INTERIEUR DU PROJET



SUR L'INTERIEUR DU PROJET DEVANT LES LOCAUX 2 ROUES